

50°45'3.186"N

B&G

TRITON™ EDGE™

QUICK START GUIDE

ENGLISH



www.bandg.com

Copyright

© 2024 Navico Group. All Rights Reserved. Navico Group is a division of Brunswick Corporation.

Trademarks

®Reg. U.S. Pat. & Tm. Off, and ™ common law marks. Visit www.navico.com/intellectual-property to review the global trademark rights and accreditations for Navico Group and other entities.

- Navico® is a trademark of Navico Group.
- B&G® is a trademark of Navico Group.
- Triton™ is a trademark of Navico Group.
- Edge™ is a trademark of Navico Group.
- H5000™ is a trademark of Navico Group.
- Hercules® is a trademark of Navico Group.
- Adrena™ is a trademark of Adrena Software.
- App Store® and App Store Logos are trademarks of Apple Inc.
- Expedition™ is trademark of Expedition Marine.
- Firefox® is a trademark of the Mozilla Foundation.
- Google Chrome® is a trademark of Google LLC.
- Google Play® and Google Play logos are trademarks of Google LLC.
- iPolar™ is a trademark of iOptron Corporation.
- Microsoft Edge® is a trademark of Microsoft Corporation.
- NMEA 2000® is a trademark of the National Marine Electronics Association.
- NMEA 0183® is a trademark of the National Marine Electronics Association.
- PredictWind® is a trademark of PredictWind Limited.
- QR code® is a trademark of Denso Wave Incorporated.
- Safari® is a trademark of Apple Inc.
- Wi-Fi® is a trademark of Wi-Fi Alliance.

Warranty

This product's warranty is supplied as a separate document.

Safety, disclaimer and compliance

This product's safety, disclaimer and compliance statements are supplied as a separate document.

Internet usage

Some features in this product use an internet connection to perform data downloads and uploads. Internet usage via a connected mobile/cell phone internet connection or a pay-per-MB type internet connection may require large data usage. Your service provider may charge you based on the amount of data you transfer. If you are unsure, contact your service provider to confirm rates and restrictions. Contact your service provider for information about charges and data download restrictions.

More information

Document version: 002

This document was prepared using software version 2.0-123.

Features described and illustrated in this guide may vary from your unit due to continuous development of the software.

For the latest version of this document in supported languages, and other related documentation, visit www.bandg.com/downloads/tritonedge

CONTENTS

- 4 Registration**
- 4 Save information
- 4 Download the B&G app
- 4 Register your Triton Edge

- 5 Connect to Triton Edge**
- 5 Connect via Wi-Fi® hotspot
- 6 Connect using Ethernet

- 8 First start up**

- 9 The web interface: main menu**

- 10 Setup guide**
- 10 At the dock tasks
- 11 On the water tasks

- 12 Dashboard**

- 13 Sailing data and sensors**
- 13 Sailing data
- 14 Sensors

- 15 Corrections and targets**
- 16 Edit a correction table
- 17 Edit or upload a polar table

- 18 Start line**
- 18 Race timer
- 19 Start line position

- 20 Data recording**
- 20 Configure recording settings
- 20 Start a recording manually
- 21 Add events
- 21 Access data recordings
- 22 Connect to the internet
- 23 Export recorded files
- 23 Delete recorded files

- 24 Hercules Expansion**
- 24 Inputs/Outputs

- 26 HV displays**

- 28 Software updates**
- 28 Install a software update
- 29 Update from file



REGISTRATION

Save information

Important information unique to your Triton Edge sailing processor, with a QR code®, is printed on a card enclosed with the packaging. A sample is shown below.



We recommend saving these details in a safe place on your vessel, so that you can connect a device to the Triton Edge at any time.

→ **Note:** *The same information and QR code® are on the back of the sailing processor.*

Download the B&G app

Use your smartphone to scan the QR code® on the card enclosed with the packaging.

This will link you to the App Store® or Google Play® (as applicable) to download and install the B&G companion app.

After you have installed the B&G app, and your mobile is connected to the internet, you can use the app to:

- Register your sailing processor
- Access manuals and installation guides
- Download sailing data recordings
- Download and apply software updates to the sailing processor.

Visit the B&G website, www.bandg.com, to see more information about the app.

Register your Triton Edge

Your Triton Edge needs to be registered to your personal B&G profile so that you can upload and access your sailing data.

Connect your smartphone to the internet, and open the B&G app.

In the app, open the **My devices** menu, and follow the instructions under **Add a device**.

The companion app will invite you to scan the QR code® card that came with the sailing processor (this QR code® is also on the back of the Triton Edge). At the completion of all the steps, the Triton Edge will be registered to the account that was used to sign into the companion app.

→ **Note:** *The Triton Edge can only be actively registered on one account.*

To unregister the Triton Edge from your B&G account, connect your mobile device to the internet and use the companion app to navigate to the **My devices** menu. Select the Triton Edge sailing processor, then select **Remove device**.

→ **Note:** *The mobile device must be connected to the internet to register (or unregister) the Triton Edge.*

CONNECT TO TRITON EDGE

Communication with the sailing processor is via a user-friendly web interface.

Access the web interface by connecting to the Triton Edge and using a compatible web browser such as Google Chrome®, Microsoft Edge®, Firefox®, or Safari®.

You can connect a mobile device to the sailing processor using either the sailing processor's Wi-Fi® hotspot, or via an Ethernet port

→ **Note:** Follow the instructions in the Installation Guide to install the Triton Edge on your vessel, and turn it on, before attempting to connect to it.

Connect via Wi-Fi® hotspot

When the Triton Edge is powered on, it creates a Wi-Fi® hotspot. The Wi-Fi® status light on the front of the unit is blue when the hotspot is operating normally.

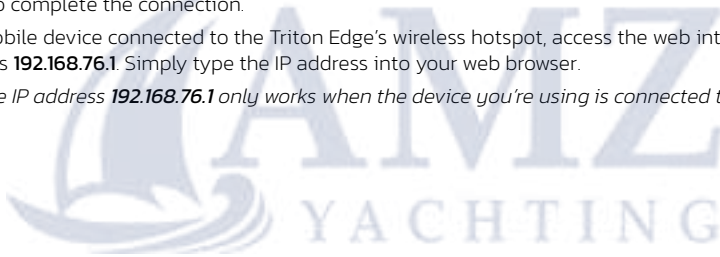
To connect your mobile device to the hotspot, open Wi-Fi® (network) settings on your mobile device. When your device is within range of the hotspot, the hotspot's name (SSID) will be visible in the list of available networks.

→ **Note:** The full name of the Triton Edge hotspot (SSID) and its security key (password) are printed with a QR code® on a card enclosed with the packaging. Save these details in a safe place on your vessel, so that you can connect a device to the Triton Edge at any time.

Enter the security key (password) from the card when prompted, and select **Connect/Join/OK** (as applicable) to complete the connection.

With your mobile device connected to the Triton Edge's wireless hotspot, access the web interface using the IP address **192.168.76.1**. Simply type the IP address into your web browser.

→ **Note:** The IP address **192.168.76.1** only works when the device you're using is connected to the Wi-Fi® hotspot.



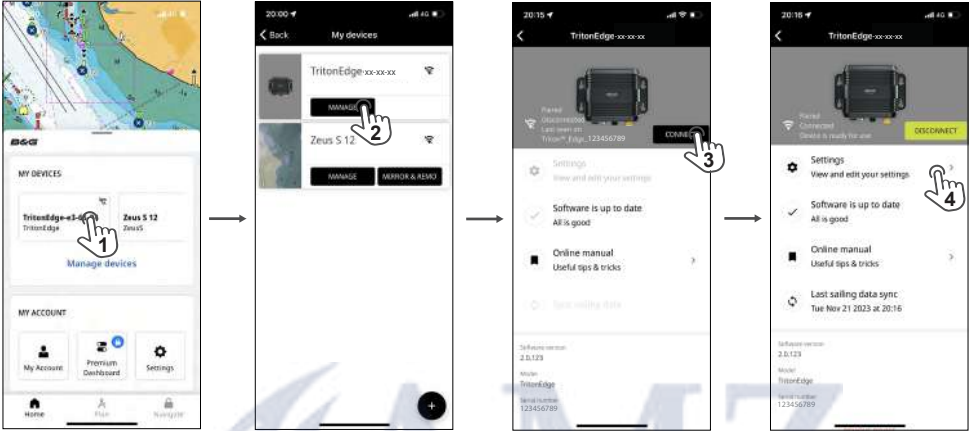
Connect via B&G app

Open the B&G app.

In the mobile app, select Triton Edge (1) from the devices panel. (See **Register your Triton Edge** on page 4 for instructions on pairing your sailing processor to your B&G account.)

Select **Manage** (2) to open Triton Edge's details page, then select **Connect** (3).

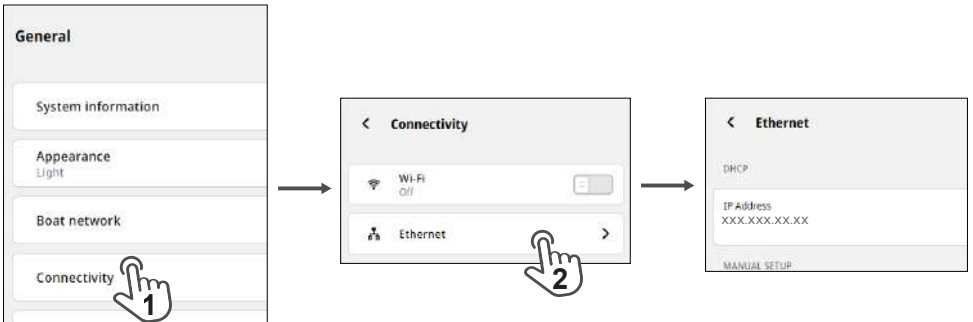
Once connected, select **Settings** (4) to open the main menu for the Triton Edge web interface.



Connect using Ethernet

An IP address is assigned to Triton Edge when it connects to Ethernet. You need this IP address if you want to access the Triton Edge web interface using a device connected to the Ethernet network.

To find the IP address using a mobile device connected to the Wi-Fi® hotspot, or a smartphone and the B&G app, access the web interface and navigate to **General > Connectivity > Ethernet**.



→ **Note:** You can assign a permanent IP address to your Triton Edge using the web interface. Navigate to **General > Connectivity > Ethernet**, then select **Edit** under **Manual setup**.

To communicate with Triton Edge using a device connected via Ethernet (rather than connected via Triton Edge's Wi-Fi® hotspot), enter the IP address into the device's web browser.

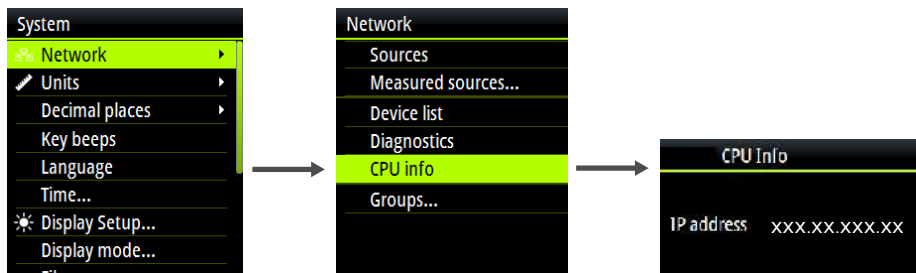
→ **Note:** The web interface is only available when connected to the Triton Edge via the hotspot, or via Ethernet. For security, the web interface is not available over a Wi-Fi® network.

Find IP address using NMEA 2000® network

As an alternative to using the web interface to find the sailing processor's IP address, you can use a multi-function display (MFD) or other compatible instrument connected to the NMEA 2000® network.

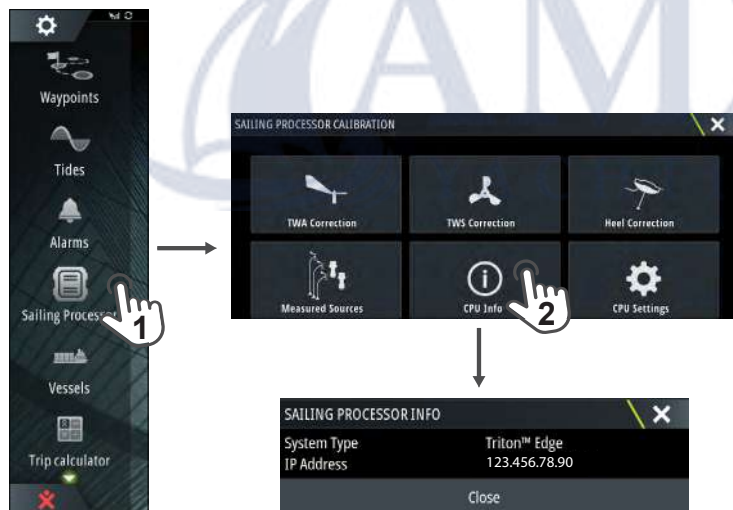
To view the IP address using a compatible display, navigate to the **CPU** or **CPU info** menus on the instrument display.

On a H5000 Graphic Display or Triton² display, the menus appear as below:



➔ **Note:** In addition to finding the IP address of the sailing processor, a compatible display or MFD can be used to update the sailing processor's settings and correction tables. However, the web interface is recommended for a detailed system setup.

On a Zeus3 display, the menus appear as below:



FIRST START UP


The first time you start the Triton Edge sailing processor and access the web interface, prompts will guide you through system settings such as naming your sailing processor, choosing your preferred units for data, and setting the time zone.

This onboarding process is only repeated following a factory reset.

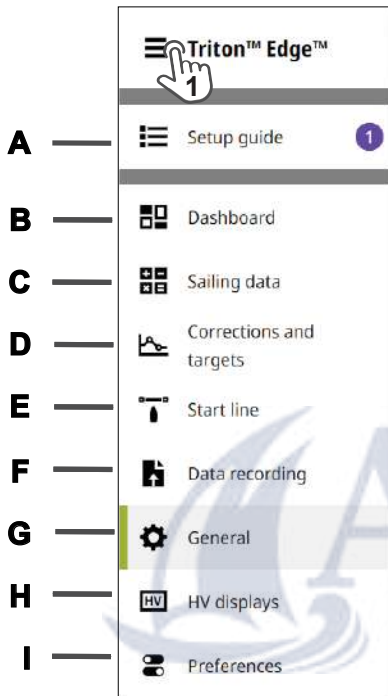
These settings may be adjusted later through the **Preferences** and **General** menus, which you can access from the main menu on the web interface.



THE WEB INTERFACE: MAIN MENU

Toggle the list icon  (1) on the main menu to reveal the list of menus, or collapse the list to give yourself more room on-screen.

→ **Note:** Items may be arranged differently when viewed on differently sized screens.



A **Setup guide**—Lists tasks for setting up and checking your sailing instruments.

→ **Note:** The **Setup guide** only displays when there are setup tasks awaiting your attention.

B **Dashboard**—Overview of data values and sensor statuses.

C **Sailing data**—Displays calculated and measured values, and gives access to sensors for checking and configuration.

D **Corrections and targets**—Gives access to advanced calibration of boat speed, true wind angle, true wind speed, and polar tables.

E **Start line**—Ping the start line and control your race timer.

F **Data recording**—Start a data recording, configure data recording settings, and upload or export sailing data.

G **General**—Gives access to general system settings such as network connections and software version.

H **HV displays**—Allows you to configure and control your HV displays using the Triton Edge web interface.


→ **Note:** This menu option is only present when one or more HV displays are connected.

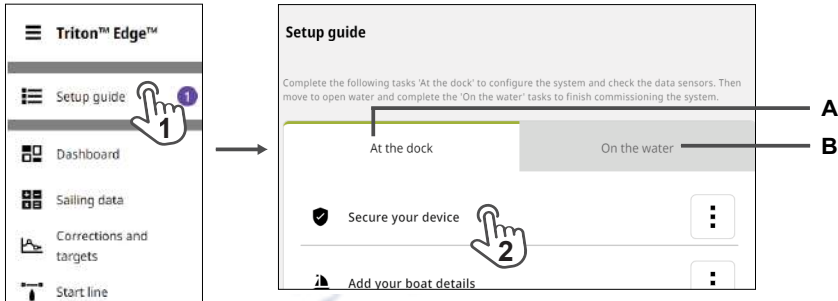
I **Preferences**—Gives access to options related to the web interface display, such as units of measurement.

SETUP GUIDE

The **Setup guide** opens automatically following the onboarding sequence. Follow the prompts and complete the tasks in the order they're presented. Some data-entry and source selection tasks can be completed on your vessel **At the dock (A)**. Tasks listed under **On the water (B)** require you to maneuver the vessel at sea.

To return to the setup guide from a different screen, select **Setup guide (1)**. To start a task, select it **(2)** in the setup guide.

To remove a task from the setup guide, select the more icon  then **Dismiss**.



→ **Note:** The **Setup guide** does not display if all tasks have been completed or dismissed. All tasks can be reopened and adjusted later.

At the dock tasks

Secure your device

Protect your settings with a personal identification number (PIN). To revisit this task later, navigate to **General > Security > Secure your device**.

→ **Note:** If you forget the PIN, the sailing processor can be unlocked from the PIN screen by entering the password found on the back of your Triton Edge.

Add your boat details

Enter your vessel's name, type, model, and dimensions. To revisit this task later, navigate to **General > My vessel**.

Select measured sources

Select the configurations and core sensors to be used by the Triton Edge for boat speed and wind. (This should be performed before running an Auto source selection.) To revisit this task later, navigate to **General > Boat network > Sources**.

Review source selection

If your vessel has an instrument system with more than one sensor for a data category, you can swap which sensor is used. To revisit this task later, navigate to **General > Boat network > Sources**. The **Auto source selection** wizard is also found under this menu, and if used, will nominate sensors for you.

Review sailing data

Lists key data, and indicates the status of related data sources. A green status indicates a reading is valid; a red status indicates that a reading isn't valid. Navigate to **Sailing data** in the main menu to review the readings at any time.

Review depth offset

Enter an offset so that the depth reading displays depth below keel or, if preferred, depth measured from the water surface. To revisit this task later, navigate to **Sailing data > Sensors > Depth**.

Review GPS offsets

Enter the positions of each of your GPS receivers, relative to vessel's bow, to get accurate start line values. To revisit this task later, navigate to **Sailing data > Sensors > GPS > Operations**.

→ **Note:** *Your vessel's beam and length must be entered for a GPS offset to work. To enter beam and length, navigate to **General > My vessel > Boat dimensions**.*

Connect to B&G cloud

Manage B&G cloud data sharing preferences. To revisit this setting later, access **Preferences** from the main menu.

On the water tasks

Calibrate the boat speed

In a sea trial, follow the steps in the calibration wizard to calibrate your boat speed sensor. To revisit this task later, navigate to **Sailing data > Sensors > Boat speed > Input**.

Calibrate the compass

In a sea trial, follow the steps in the calibration wizard to calibrate your compass. To revisit this task later, navigate to **Sailing data > Sensors > Heading > Input**.

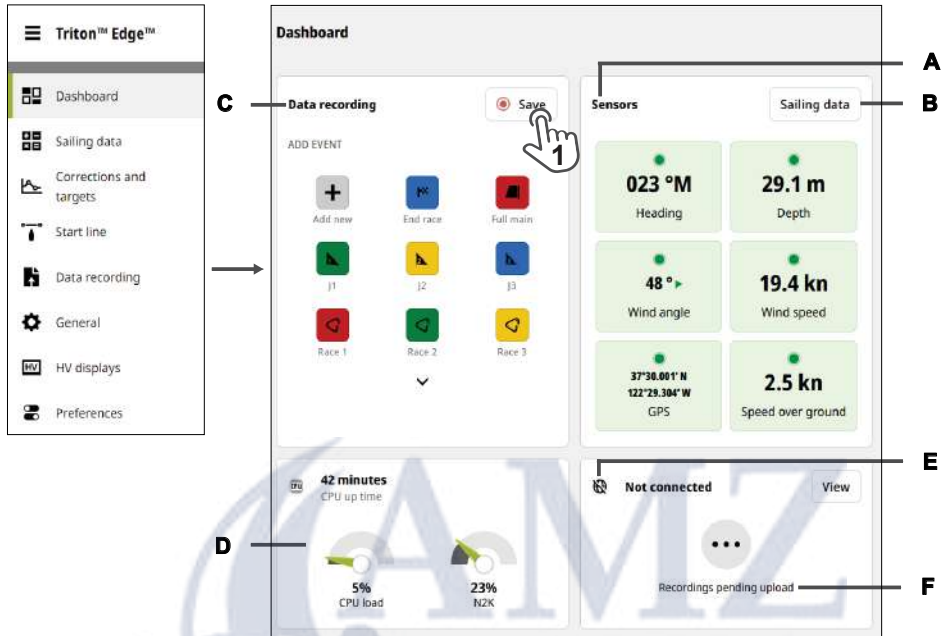
Calibrate the wind angle offset

In a sea trial, follow the steps in the calibration wizard to calibrate the measured wind angle offset. To revisit this task later, navigate to **Sailing data > Sensors > Wind angle > Operations**.

→ **Note:** *Precise measurement of the wind angle offset requires a steady wind direction. If possible, delay the calibration of the wind angle offset until the conditions are suitable.*

DASHBOARD

The dashboard provides an overview of key readings and operations without you accessing different menus.

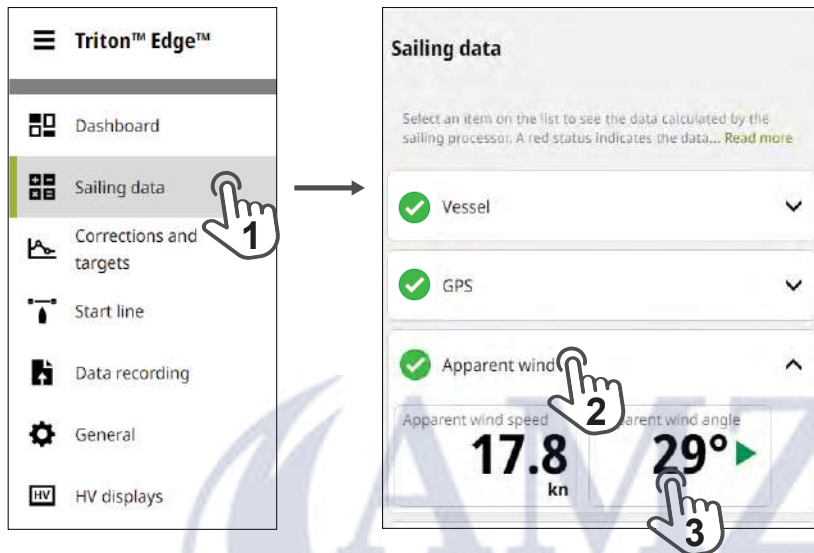


- A **Sensors**—Gives an overview of core selected sensors.
 - **Note:** A red background indicates that data may not be valid, and you should review the sensors associated with that reading (including checking the sensors' physical connections).
- B **Sailing data**—Gives you access to all the calculated values and associated settings for each piece of data.
- C **Data recording**—When a recording is in progress, you can add event markers, and save the recording (1) from this panel on the dashboard. If recording is not in progress, you can start a recording from this panel.
- D The gauges panel shows the loads on the central processing unit (**CPU load**) and NMEA 2000® network (**N2K**).
- E Internet connection status.
- F **Recordings pending upload**—Recorded data files are stored in the sailing processor's memory. Data types recorded by default will be uploaded to your profile in the cloud when an internet connection is available, provided you've chosen that option in the data recording menu.

SAILING DATA AND SENSORS

Sailing data

Open the **Sailing data** (1) menu, and select a category (2) to display readings for that category. Select a reading (3) to open the data and sensors card associated with that reading.



Readings are in real-time, with the refresh rate determined by the damping value.

→ **Note:** The units of measurement can be changed via **Preferences** under the main menu.

Sensors

The **Sensors** menu is on the right of the **Sailing data** screen, and is used to access data cards and settings for core connected sensors. Values from these sensors are also displayed on the **Dashboard**.

The screenshot shows the 'SENSORS' menu on the left with a list of sensors: Heading, Depth, Wind angle, Wind speed, GPS, and Speed over ground. A hand icon with the number '1' points to 'Wind speed'. On the right, three data cards are shown: 'AWA/AWS', 'INPUT', and 'OPERATIONS'. A hand icon points to the 'Wind speed' card in the 'INPUT' section. Labels A, B, C, and D are placed above the cards to indicate different sections.

Section	Card	Value
A	AWA/AWS	Apparent wind speed: 6.4 kn
B	AWA/AWS	True wind speed: 5.7 kn
B	AWA/AWS	True wind angle: 68°
B	AWA/AWS	True wind direction: 253 °M
C	INPUT	Measured wind speed: 5.7 kn
C	INPUT	Measured wind angle: 62°
D	OPERATIONS	Wind angle offset: -4.0
D	OPERATIONS	Heel corrected wind: [Toggle]
D	OPERATIONS	Use mast rotation: [Toggle]
D	OPERATIONS	Leeway corrected wind: [Toggle]

- A Live data value—This is derived from the inputs and operations applied.
- B **Directly used by**—Lets you know which calculations depend on the live data value.
- C **Input**—Lets you check or change the source used for the live data value, and view other readings from the same source.
- D **Operations**—Allows you to apply settings and adjust offsets for that source.

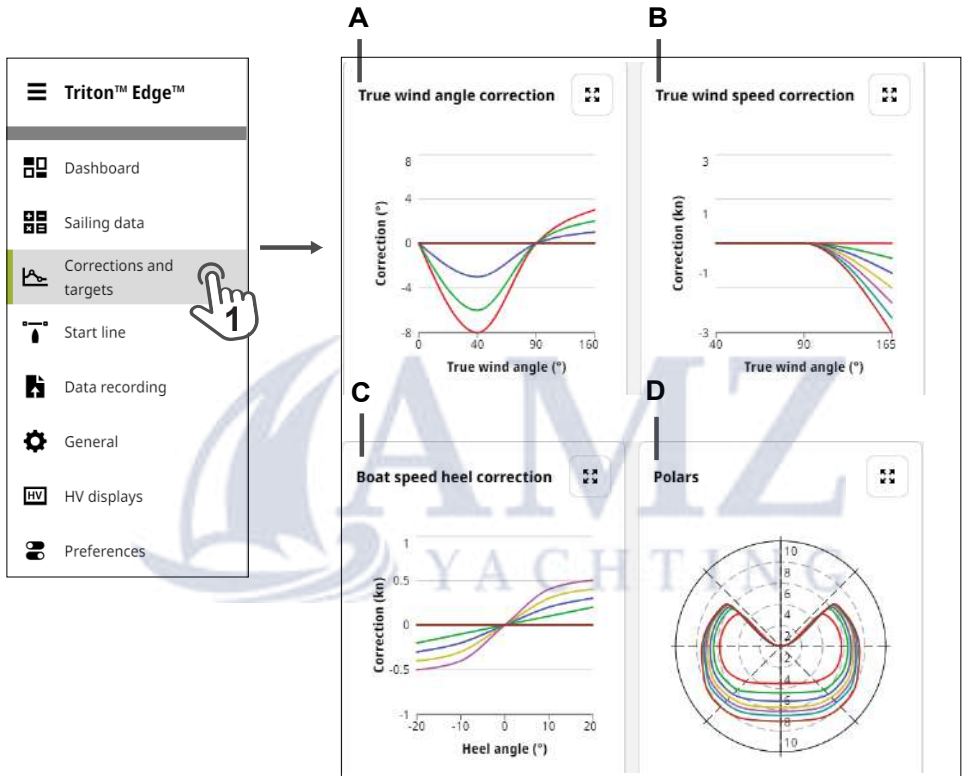
→ **Note:** Refer to the inline help text on the web interface for detailed information.

CORRECTIONS AND TARGETS

Correction tables allow you to correct boat speed and true wind direction tack to tack by applying offsets at different wind speeds or heel angles.

The data from the polar table is used for the **Target boat speed** and **Target true wind angle** displayed on the **Start line** screen, and is available for all connected displays.

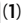
Select **Corrections and targets (1)** in the main menu to see an overview of the corrections data.

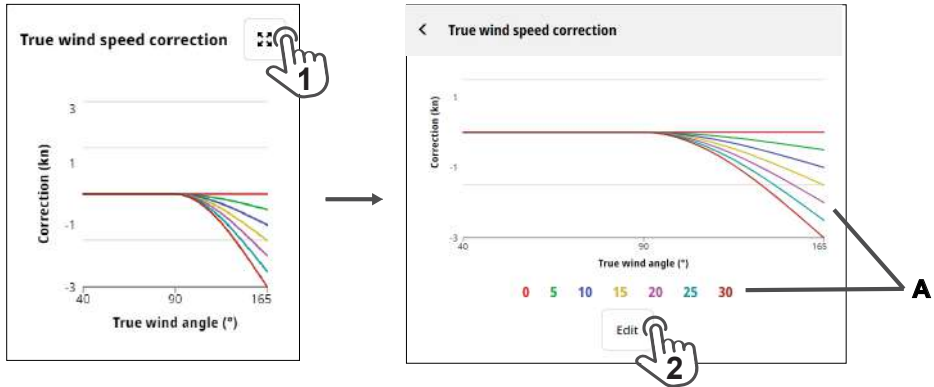


Triton Edge can store a correction table for each of the following:

- A **True wind angle correction**—Adjust the true wind angle reading depending on true wind angle, across a range of different true wind speeds.
- B **True wind speed correction**—Adjust the true wind speed reading depending on true wind angle, across a range of different true wind speeds.
- C **Boat speed heel correction**—Adjust the boat speed reading depending on heel angle, across a range of different boat speeds.
- D **Polars**—Show target boat speed as a function of true wind angle, across a range of different true wind speeds.

Edit a correction table

Select the enlarge icon  (1) at the top right of a correction table or polar table to open its graph full screen. This allows you to view the legend for the different wind speeds (A), and to access the data for editing (2).




Select a cell (3), or tab between the cells, to enter true wind angles or corrections (or boat speed for a polar table). Corrections can be negative or positive.

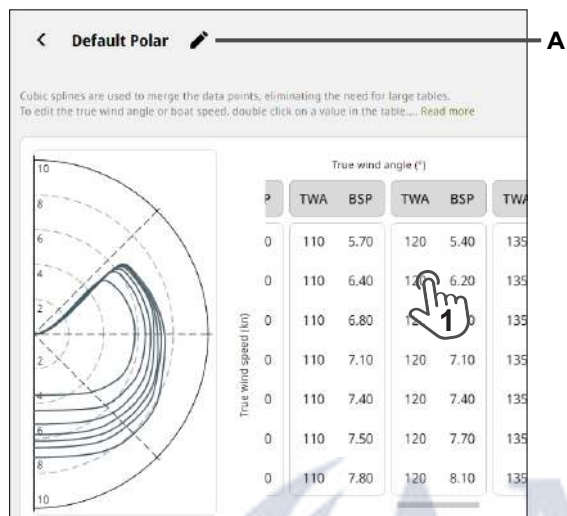
	True wind angle (°)					
	TWA	COR	TWA	COR	TWA	COR
0	40	0.0	90	0.0	165	0.0
5	40	0.0	90	0.0	165	-0.5
10	40	0.0	90	0.0	165	-1.0
15	40	0.0	90	0.0	165	-1.5
20	40	0.0	90	0.0	165	-2.0
25	40	0.0	90	0.0	165	-2.5
30	40	0.0	90	0.0	165	-3.0

→ **Note:** Refer to the inline help on the web interface to view the processes for determining correction values. The true wind angle correction table contains an **Auto-calibrate** wizard that gives prompts for maneuvers to calculate the correction.

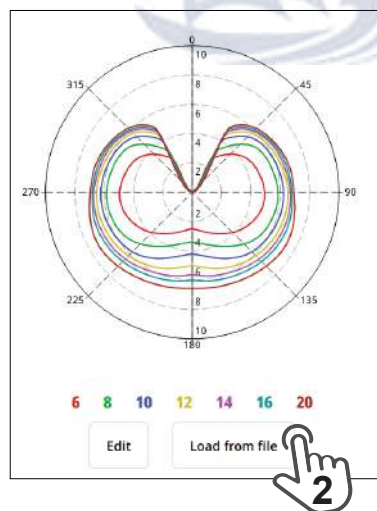
Edit or upload a polar table

When a polar table (or correction table) is open for editing, you can select the pencil icon  (A) at the top of the screen to change the title of the table.

Select an entry in the table, (1), to overwrite the value for true wind angle (TWA) or boat speed (BSP).



When a polar table is open full-screen, **Load from file** (2) allows you to search your connected device for a polar table and upload it to Triton Edge. (This will overwrite any existing polar table on Triton Edge.) Files from the following software tools can be uploaded: Expedition™, PredictWind®, Adrena™, iPolar™, and B&G H5000™. The following file formats are accepted: .pol, .txt, and .csv.



START LINE

Race timer

The race timer (A) can be used to count down to zero from a specified time.

Use the - (1) and + (2) buttons to adjust the race timer.

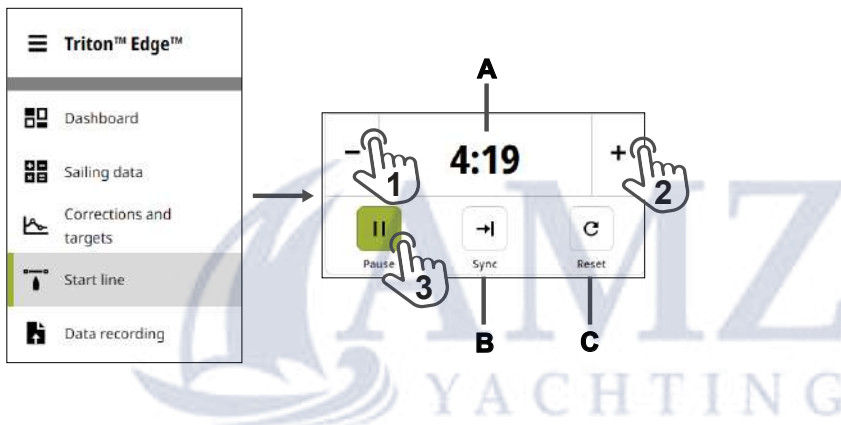
Use the **Start/Pause (3)** button to start, pause, and resume the countdown.

→ **Note:** The option to start a data recording when the race timer starts its countdown is found under the **Data recording settings** menu.

When the timer reaches zero, it starts counting up to show the time elapsed from zero. The timer continues to count until you stop it.

The **Sync (B)** button jumps the timer forward or back to the nearest whole minute.

The **Reset (C)** button reverts the timer to its start value.



Start line position

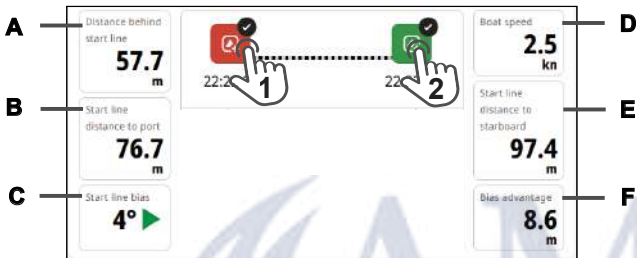
When Triton Edge has the position of a race start line, it can display a range of helpful calculations related to the start line.

→ **Note:** Before pinging the start line, ensure you have entered the offset (relative to the bow) for the GPS source you are using. Enter the offset by navigating to **Sailing data > Sensors > GPS > Operations**.

To 'ping' (record the positions of) the ends of the start line, position the bow of the vessel at the port end of the start line, and select the port icon on-screen (1).

Move the vessel to the starboard end of the start line, and when the bow is at the starboard end of the start line, select the starboard icon on-screen (2).

The times displayed at each end of the start line on-screen show when each position was recorded. Data values shown against a red background indicate invalid calculations (the position of the start line has not been recorded correctly).



- A Distance behind start line
- B Start line distance to port
- C Start line bias
- D Boat speed
- E Start line distance to starboard
- F Bias advantage

DATA RECORDING

Triton Edge can record, at a sampling rate of once per second (1 Hz), a predefined list of calculated values and sensor readings.

→ **Note:** Your Triton Edge must be registered to your B&G account before any recordings can be uploaded to the cloud for review. See **Register your Triton Edge** on page 4 for instructions on pairing your sailing processor to your B&G account.

Configure recording settings

Select the settings icon **(A)** to configure settings such as starting a data recording when the vessel exceeds a certain speed, or synchronize recording with the start timer in a race. Select **Automatically upload recordings** from this menu to ensure your recordings will be uploaded to your account in the B&G cloud when an internet connection is available.



Start a recording manually

Select **Data recording (1)** from the main menu, then select **Start new (2)** to begin recording.

Select **Save (3)** to end the recording and save the file to the sailing processor.

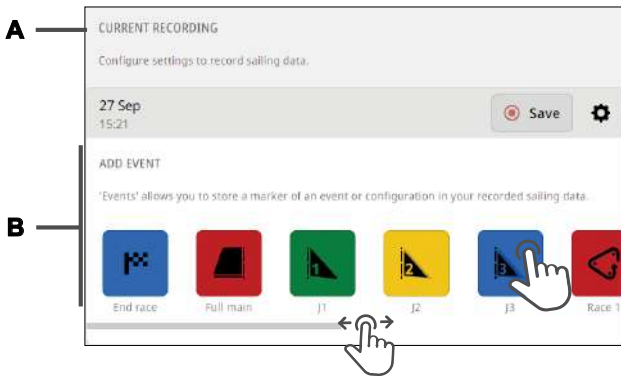
→ **Note:** Data recordings continue until you select **Save** to stop the recording and save the file to the sailing processor.



Add events

You can place time-stamps with labels into your data during a recording.

When a recording is in progress (A), select one or more pre-labelled **Add event** (B) markers.




→ **Note:** You can also start and stop recordings, and place event markers, from the **Dashboard** on the main menu.

Access data recordings

Past recordings are listed on the **Data recording** screen and are identified by their date and start time.

To analyze your recorded sailing data using the companion app, the files first need to be uploaded to your B&G profile in the cloud using an internet connection. The contents of recorded data files cannot be viewed directly on Triton Edge.

To upload data recordings to your B&G account, navigate to the **Data recording settings** menu by selecting the cog icon  and set the switch **Automatically upload recordings** to on.

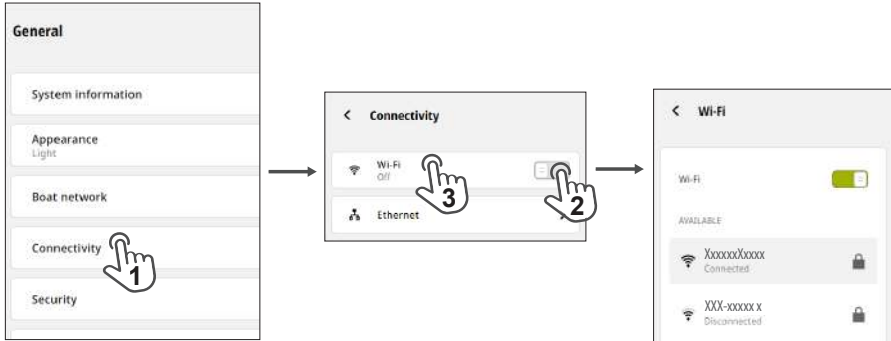
→ **Note:** Your Triton Edge must be registered to your B&G account before any recordings can be uploaded to the cloud for review. See **Register your Triton Edge** on page 4 for instructions on pairing your sailing processor to your B&G account.

Connect to the internet

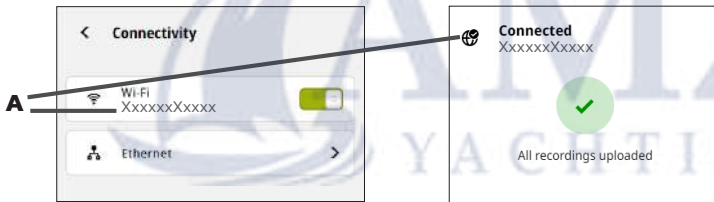
Use the main menu to navigate to **General > Connectivity (1)**.

Move the slider (2) to its on state. If a previously-used network is in range, the Triton Edge will automatically connect to it when you switch on Wi-Fi®.


To connect to a new network, open the list of available Wi-Fi® networks (3) and select the network you want to join. Enter the password for the Wi-Fi® network if prompted.

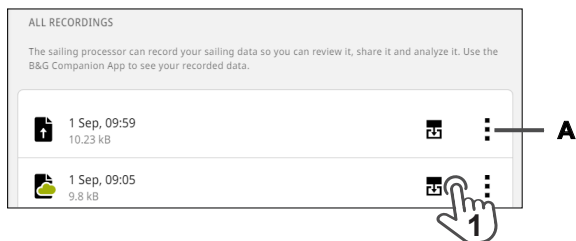


When the Triton Edge is connected to a Wi-Fi® network, the name of the network (SSID) displays (A). The internet connection status and SSID also show on the **Dashboard** accessed from the main menu.

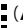


Export recorded files

With the Triton Edge connected to a laptop, tablet, or phone, navigate to the **Data recording** screen to see the list of recorded files. Select the export icon  (1) beside a recording of interest to export that file to the laptop, tablet, or phone in .gpx or .csv format.



Delete recorded files

To delete a recording permanently from the sailing processor, select the more icon  (A), then **Delete**.

→ **Note:** The option to delete data recordings from the unit automatically to free up space is configured from the settings icon on the **Data recording** screen.



HERCULES EXPANSION

Hercules Expansion is an optional, separate processor that extends your system with further configurable inputs.

→ **Note:** To install a Hercules Expansion, refer to the instructions in the Hercules Expansion Installation Guide.

Hercules Expansion and the sensors connected to it are visible under the **Inputs/Outputs** menu on the same web interface as your Triton Edge.

→ **Note:** The **Inputs/Outputs** menu is only visible when an appropriate expansion module is connected.

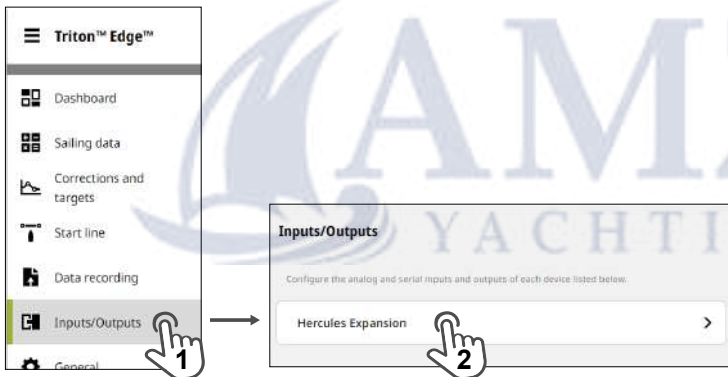
Further devices configurable from the Triton Edge web interface (if they are connected) include H5000 analog expansion modules, H5000 serial expansion modules, and the B&G NMEA 0183® to NMEA 2000® interface.

Inputs/Outputs

After you've connected sensors or alarms to a Hercules Expansion module, the input and output channels need to be configured so the sailing processor knows how to process the signals on each of its channels.

Open **Inputs/Outputs** (1) from the main menu on the Triton Edge web interface.

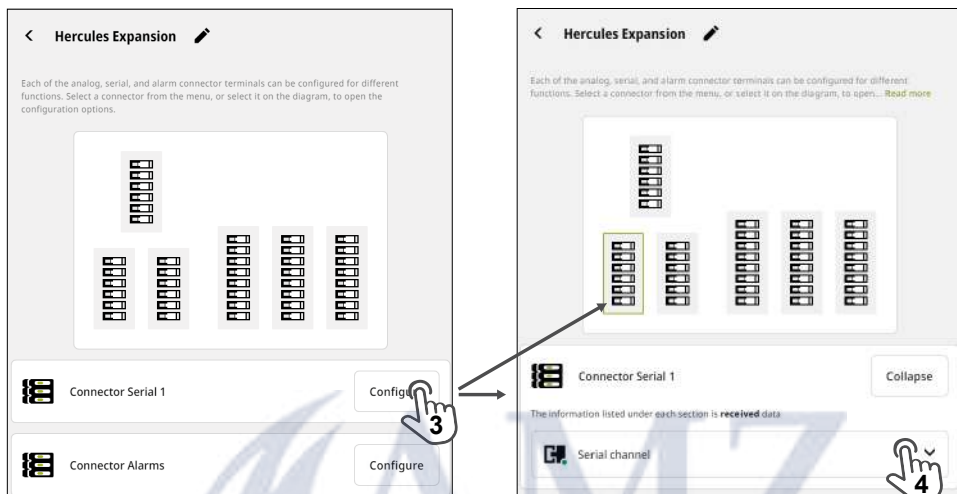
Select **Hercules Expansion** (2) to enter the configuration menu for the Hercules Expansion module.



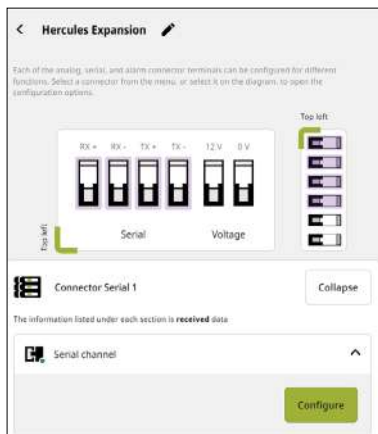
The diagram at the top of the **Inputs/Outputs** menu shows the six configurable ports on the Hercules Expansion circuit board.

Select **Configure (3)** beside the name of the connector, or select the connector on the diagram, to list the inputs and outputs (channels) for that port.

Select an individual channel from the menu (**4**) to configure that channel, or to view data on the channel if the channel has already been configured.



The functions for each pin on the Hercules Expansion printed circuit board (PCB) are displayed on the web interface when you use the web interface to open a channel for configuration. They are also labeled on the Hercules Expansion PCB itself.



For more information about Hercules Expansion, how to configure its Inputs and Outputs, and connector wiring examples, please refer to the Basic Operation Guide for the Hercules series of sailing processors.

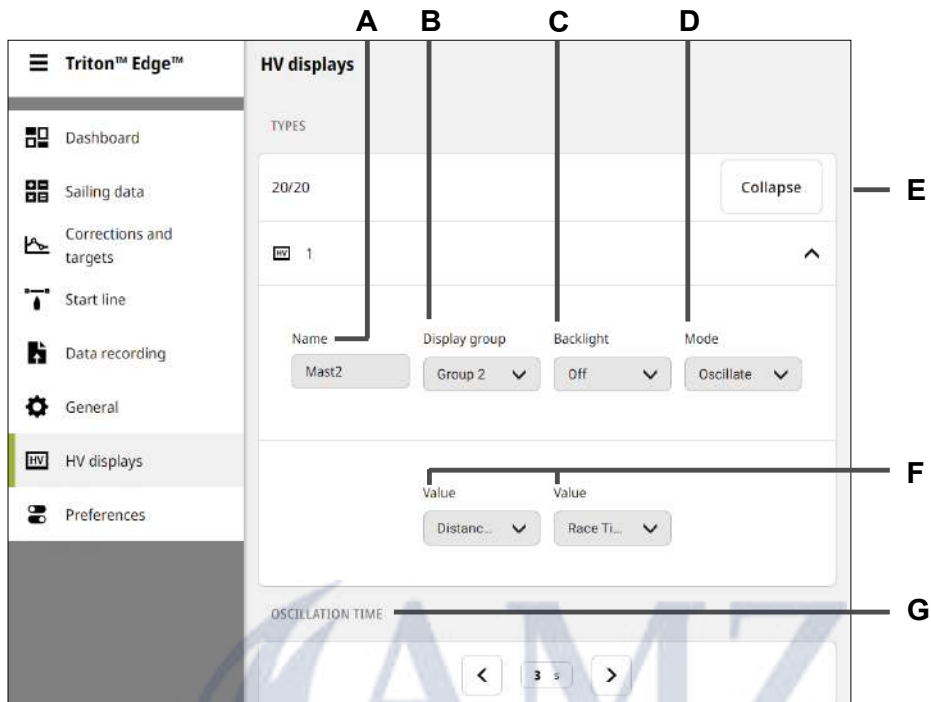
HV DISPLAYS

A B&G HVision display (HV display) connected to the NMEA 2000® network can be configured using the Triton Edge web interface.

→ **Note:** The *HV displays* menu is only visible when one or more HV displays are connected.

Select **HV displays** from the main menu (1). Connected displays are listed by their type. Select **Configure** (2) to configure each HV display.





- A **Name**—Select to edit the name of a display. If you have several HV displays on the network, renaming them according to their location might help you identify them for easy configuration.
- B **Display group**—Assign the display to a display group to change settings for that group of displays simultaneously.
- C **Backlight**—Adjust the backlight on the selected display.
- D **Mode**—Set the contexts for the data displayed. For example, display a single data type continuously, or display different data types depending on whether you are sailing upwind or downwind.
- E **Collapse**—Collapse the configuration menu for this HV display.
- F **Display values: 1st value, 2nd value**—Use the drop-down lists to select the data types displayed on this HV display.
 - *Note: The visible options are determined by the **Mode** setting.*
- G **Oscillation time**—Sets the duration, in seconds, a data type displays before switching to a different data type.
 - *Note: Not all modes allow oscillation.*

SOFTWARE UPDATES

Software updates for Triton Edge are released from time to time and we recommend installing these as they become available.

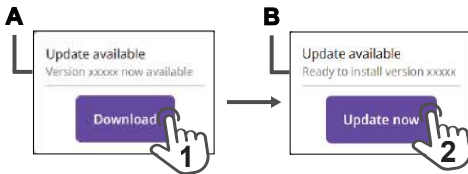
Install a software update

Your sailing processor will automatically check for software updates when it's connected to the internet.

When a software update is available, the notification **Version X now available (A)** appears on the web interface's main menu.

Select **Download (1)** on the notification to download the update file to Triton Edge (an internet connection is required).

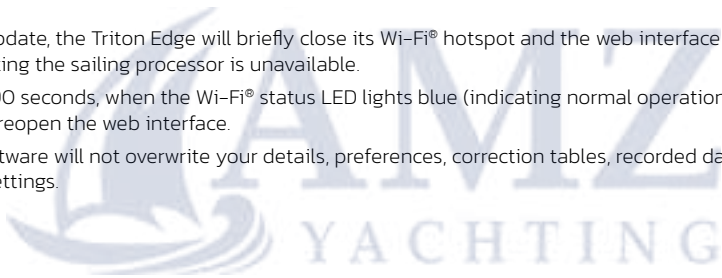
When the notification changes to **Ready to install version X (B)**, select **Update now (2)** to proceed.



During the update, the Triton Edge will briefly close its Wi-Fi® hotspot and the web interface will show a message stating the sailing processor is unavailable.

After about 90 seconds, when the Wi-Fi® status LED lights blue (indicating normal operation) select **Try again** to reopen the web interface.

Updating software will not overwrite your details, preferences, correction tables, recorded data files, or calibration settings.

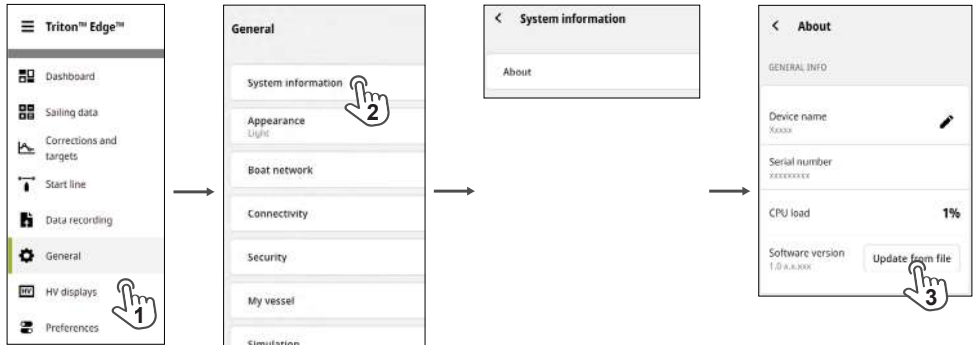


Update from file

Alternatively, you can download an update file to a tablet or laptop from the the B&G website, www.bandg.com/downloads.

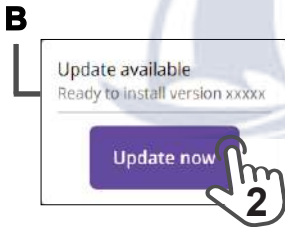
After downloading the update file to your mobile device, install the update on Triton Edge, by connecting your mobile device to Triton Edge and using the web interface to navigate to **General > System information > About > Software version**.

Select **Update from file** (3).



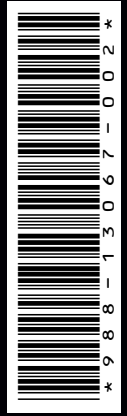
Locate and select the .upd file you downloaded to your mobile device.

When the notification changes to **Ready to install version X** (B), select **Update now** (2) to proceed.



Updating software will not overwrite your details, preferences, correction tables, recorded data files, or calibration settings.

→ **Note:** The B&G app notifies you when software updates are available for registered devices. You can use the app to download the update file to your mobile device using mobile data or an internet connection.



50°45'3.186"N
1°31'45.971"W

© 2024 Navico Group. All Rights Reserved.
Navico Group is a division of Brunswick Corporation.
®Reg. US Pat. & Tm. Off. and ™ common law marks.
Visit www.navico.com/intellectual-property to review the global trademark rights and accreditations for Navico Group and other entities.

www.bandg.com